



# ACCELERATING TOWARDS PRODUCTION

CORPORATE PRESENTATION ▼ JANUARY 2026

[WWW.SCOTTIERESOURCES.COM](http://WWW.SCOTTIERESOURCES.COM)

FSE: **SR80**

TSXV: **SCOT**

OTCQB: **SCTSF**





# FORWARD LOOKING STATEMENTS

Forward-looking statements relate to future events or the anticipated performance of the Company and reflect management’s expectations or beliefs regarding such future events and anticipated performance. In certain cases, forward-looking statements can be identified by the use of words such as “plans”, “expects”, “is expected”, “budget”, “scheduled”, “estimates”, “forecasts”, “intends”, “anticipates” or “believes”, or variations of such words and phrases or statements that certain actions, events or results “may”, “could”, “would”, “might” or “will be taken”, “occur” or “be achieved”, or the negative of these words or comparable terminology. By their very nature forward-looking statements involve known and unknown risks, uncertainties and other factors which may cause the actual performance of the Company to be materially different from any anticipated performance expressed or implied by the forward-looking statements.

Important factors that could cause actual results to differ from these forward-looking statements include risks related to failure to define mineral resources, to convert estimated mineral resources to reserves, the grade and recovery of ore which is mined varying from estimates, future prices of gold and other commodities, capital and operating costs varying significantly from estimates, political risks arising from operating in certain jurisdictions, uncertainties relating to the availability and costs and availability of financing needed in the future, changes in equity markets, inflation, changes in exchange rates, fluctuations in commodity prices, delays in the development of projects, conclusions of economic evaluations, changes in project parameters as plans continue to be refined, uninsured risks and other risks involved in the mineral exploration and development industry.

Although the Company has attempted to identify important factors that could cause actual performance to differ materially from that described in forward-looking statements, there may be other factors that cause its performance not to be as anticipated. There can be no assurance that forward-looking statements will prove to be accurate, as actual results and future events could differ materially from those anticipated in such statements. Accordingly, readers should not place undue reliance on forward-looking statements. These forward-looking statements are made as of the date of this presentation and the Company does not intend, and does not assume any obligation, to update these forward-looking statements.

## † Qualified Persons

Thomas Mumford, Ph.D., P.Geo., Scottie Resources Corp., is the Qualified Person as defined by National Instrument 43-101 (NI 43-101) for the Scottie Gold Project, and has reviewed and approved the data disclosed in this presentation, including sampling, analytical, and test data underlying the information disclosure.

# CAPITAL STRUCTURE

## CASH POSITION

Issued and Outstanding  
Market Capitalization  
52 Week Range  
Warrants  
Options/RSU/DSU  
Fully Diluted

## \$39 M CAD

75,530,520  
\$124.6 M CAD  
\$0.80 - \$1.94  
2,377,294  
4,138,999  
82,046,813

## STRATEGIC PARTNERSHIPS

FRANCO-NEVADA ————— 2% GPR Royalty (\$8.1 M CAD)  
\$1.5 M CAD Equity Investment  
OCEAN PARTNERS ————— Equity Investment, Off-take Agreement  
\$25 M USD Financing

## ANALYST COVERAGE

AGENTIS  
CORMARK SECURITIES  
RESEARCH CAPITAL CORPORATION





# MANAGEMENT & DIRECTORS

..... CEO & DIRECTOR ..... PRESIDENT ..... CHIEF OPERATING OFFICER ....



**BRADLEY ROURKE**



**THOMAS MUMFORD**  
Ph.D, P.Geo



**SEAN MASSE**  
P.Eng

DIRECTOR

ERNEST MAST  
M. Eng., P. Eng

DIRECTOR

JOHN WILLIAMSON  
P.Geol.

DIRECTOR

STEVEN STEIN

DIRECTOR

ELLIE OWENS  
J.D., M.Sc.

DIRECTOR

BRENT OMLAND

CORPORATE SECRETARY

CHRISTINA BODDY  
B.Sc.

CFO

STEPHEN SULIS  
CPA



# RECENT ADVANCES

703,000 oz of gold consisting of an underground resource of 528,000 oz at 8.7 g/t and an open pit resource of 174,000 oz at 3.2 g/t

Ocean Partners \$6 M Equity & \$25 M USD Construction and Overrun Facility

News released in October 2025,  
\$2600 USD/oz: \$215.8 M NPV<sup>5%</sup>, 60.3% IRR  
\$4200 USD/oz: \$668.3 M NPV<sup>5%</sup>, 153.2% IRR

10,000 t bulk sample, mined, crushed transported, and sold

**MAIDEN RESOURCE**

**STRATEGIC PARTNERSHIP**

**PRELIMINARY ECONOMIC ASSESSMENT**

**SURFACE BULK SAMPLE**



# INVESTMENT HIGHLIGHTS

**CASH POSITION**  
**\$39 M CAD**



## LOCATED IN BC'S GOLDEN TRIANGLE

Prolific Tier 1  
mining jurisdiction

Favourable  
geologic position

7 Past-producing  
mines



## INFRASTRUCTURE & ACCESSIBILITY

40 km from Stewart,  
BC, and Portland Canal

4-season road access

Existing mining  
infrastructure



## ADVANCED EXPLORATION

6 km trend of  
high-grade discoveries

Deposits outcrop from  
surface to >500 m depth

Rapid expansion of brown  
& greenfield targets



## COMMANDING LAND POSITION

~58,500 ha in the  
Stewart Mining Camp

Properties adjacent to  
Ascot Resources and  
Newmont Mining



## EXPERIENCED MANAGEMENT TEAM

Independent board  
with track record  
of success

Deeply entrenched  
in the Golden Triangle  
and surrounding  
communities



# THE GOLDEN TRIANGLE

**TECK | \$34 B | SCHAFT CREEK**  
7.7 B LB COPPER, 6.9 M OZ GOLD, M&I<sup>1</sup>

**NEWMONT / TECK | GALORE CREEK**  
5.1 B T COPPER, 9.2 M OZ GOLD, M&I<sup>2</sup>

**SEABRIDGE | \$4.51 B | KSM**  
88 M OZ GOLD DEPOSIT M&I<sup>3</sup>

**ASCOT | \$29.4 M | PREMIER**  
2,500 TON PER DAY MILL COMMISSIONING, 2024  
\$50 M INVESTMENT BY CCORI APU, JANUARY 2023

**GOLIATH | \$439.4 M | GOLDDIGGER**

## THE PAST-PRODUCING SCOTTIE GOLD MINE

**NEWMONT | \$118 B | TATOGGA**  
\$393 M ACQUISITION OF GT GOLD IN 2021

**NEWMONT | \$118 B | RED CHRIS**  
980 M T MINERAL RESOURCE ESTIMATE, M&I, 2021<sup>1</sup>  
PRODUCED 67.6 M LBS COPPER, 2022

**SKEENA | \$4.3 B | SNIP, ESKAY CREEK**  
ESKAY CREEK | 5.2 M OZ GOLD E<sub>q</sub> RESOURCE M&I<sup>5</sup>  
RECENT US\$750 M FINANCING WITH ORION RESOURCES

**TUDOR | \$400.3 M | TREATY CREEK**  
23.3 M OZ GOLD E<sub>q</sub> RESOURCE INDICATED<sup>6</sup>

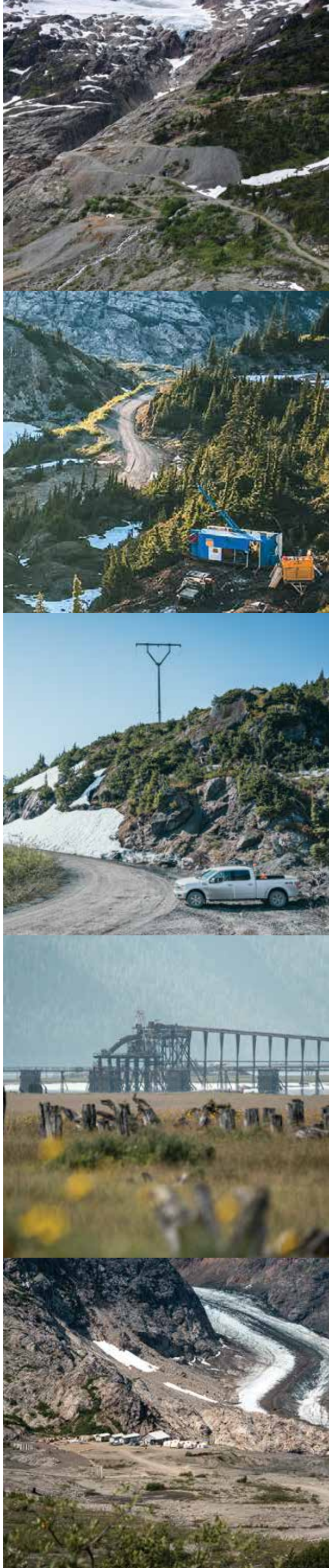
**NEWMONT | \$118 B | BRUCEJACK**  
PRODUCING 350,000 GOLD OZ/YEAR  
RECENT \$3.5 B TAKEOVER

**DOLLY VARDEN | \$550.9 M | HOMESTAKE**



# 58,500 HECTARE DISTRICT-SCALE LAND PACKAGE

Located in BC’s prolific Golden Triangle,  
Host to seven past-producing mines,  
with advanced infrastructure in-place.



**BRUCEJACK MINE**  
Newmont Mining

**PAST-PRODUCING**  
**SCOTTIE GOLD MINE**

**GRANDUC ROAD**  
Scottie Gold Mine to Stewart, BC - 40 km

**PREMIER MINE & MILL**  
Ascot Resources

**BRUCEJACK TRANSMISSION LINE**

**STEWART, BC**  
Deep water shipping port

**RED MOUNTAIN DEPOSIT**

**GEORGIA RIVER MINE**

- SCOTTIE RESOURCES
- NEWMONT MINING
- ASCOT RESOURCES
- PAST-PRODUCER
- POWER LINE
- US-CAN BORDER
- 4-SEASON ROAD
- MINFILE OCCURENCE

0 10 20 km



# PROJECT OVERVIEW





# BLUEBERRY CONTACT ZONE

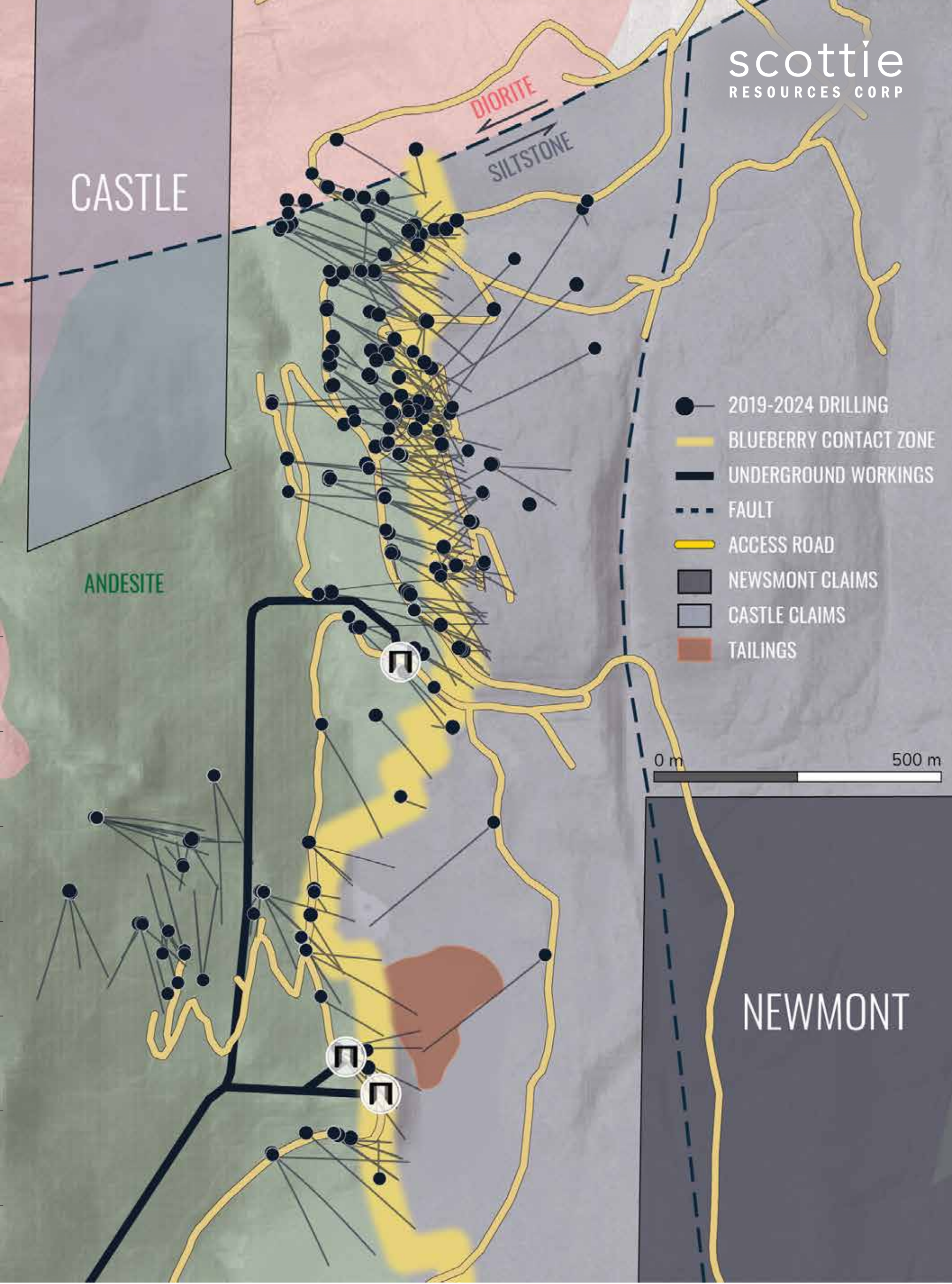
Select highlights from 2019-2025 drill programs

Strike length of 1.6 km and depth of 525 m

Gold-pyrrhotite intrusion-related system occurring along an andesite-siltstone contact



30.1 G/T GOLD OVER 23.65 M	194 G/T GOLD OVER 2.40 M	34.6 G/T GOLD OVER 11.90 M
7.44 G/T GOLD OVER 34.78 M	9.79 G/T GOLD OVER 25.00 M	56.4 G/T GOLD OVER 3.70 M
15.3 G/T GOLD OVER 13.49 M	9.2 G/T GOLD OVER 21.00 M	114.7 G/T GOLD OVER 1.58 M
88.4 G/T GOLD OVER 2.00 M	7.07 G/T GOLD OVER 24.55 M	12.5 G/T GOLD OVER 13.30 M
16.5 G/T GOLD OVER 10.00 M	34.5 G/T GOLD OVER 4.70 M	53.2 G/T GOLD OVER 3.00 M
8.21 G/T GOLD OVER 19.00 M	4.94 G/T GOLD OVER 28.80 M	22.2 G/T GOLD OVER 6.35 Mv
7.43 G/T GOLD OVER 18.75 M	130 G/T GOLD OVER 1.05 M	22.3 G/T GOLD OVER 6.10 M
8.96 G/T GOLD OVER 13.70 M	8.07 G/T GOLD OVER 14.60 M	17.4 G/T GOLD OVER 6.57 M
37 G/T GOLD OVER 2.85 M	8.6 G/T GOLD OVER 11.30 M	2.05 G/T GOLD OVER 44.00 M



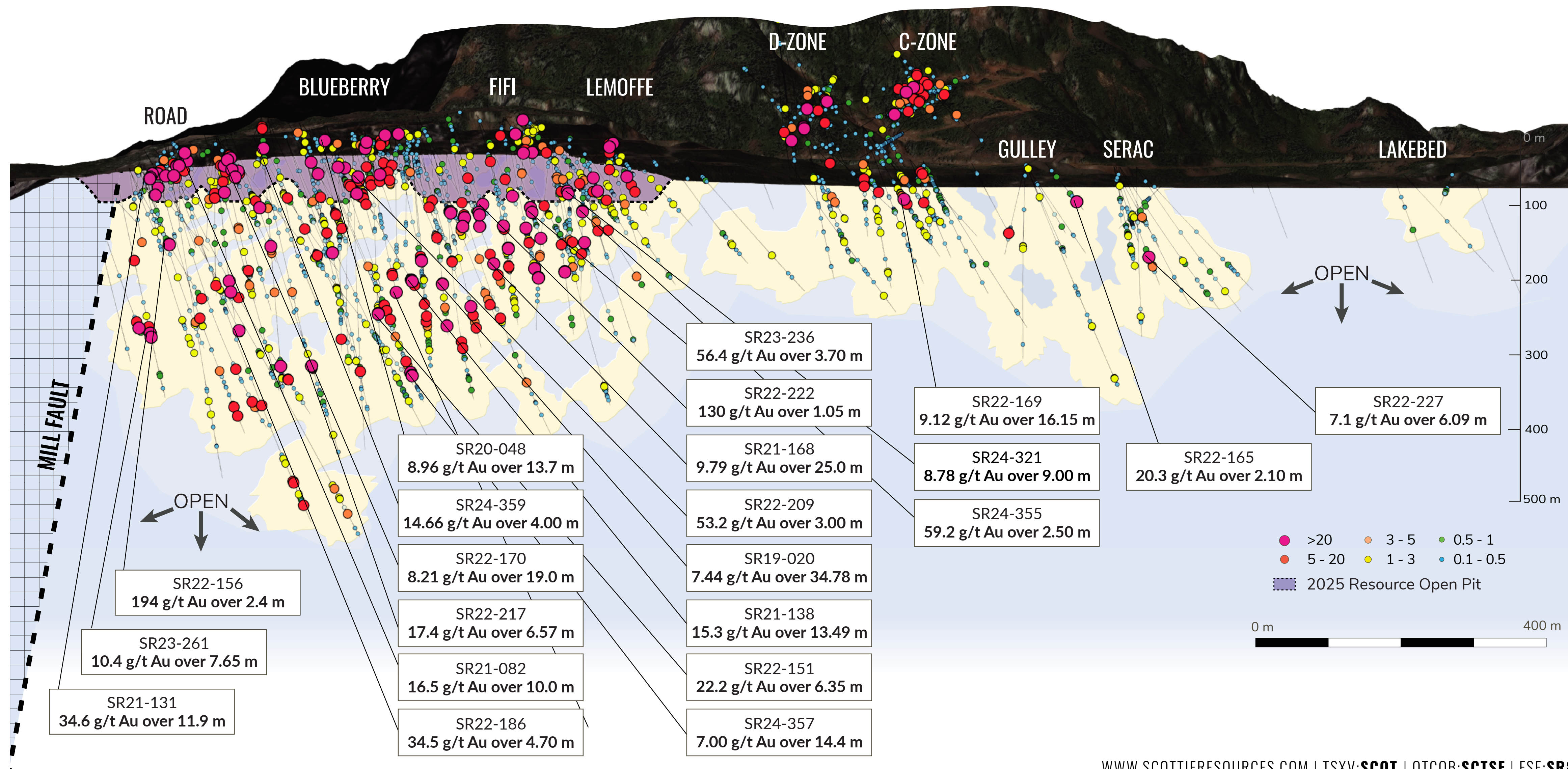


# 2.0 KILOMETRES BLUEBERRY CONTACT ZONE

North

Viewing Angle East 090°

South





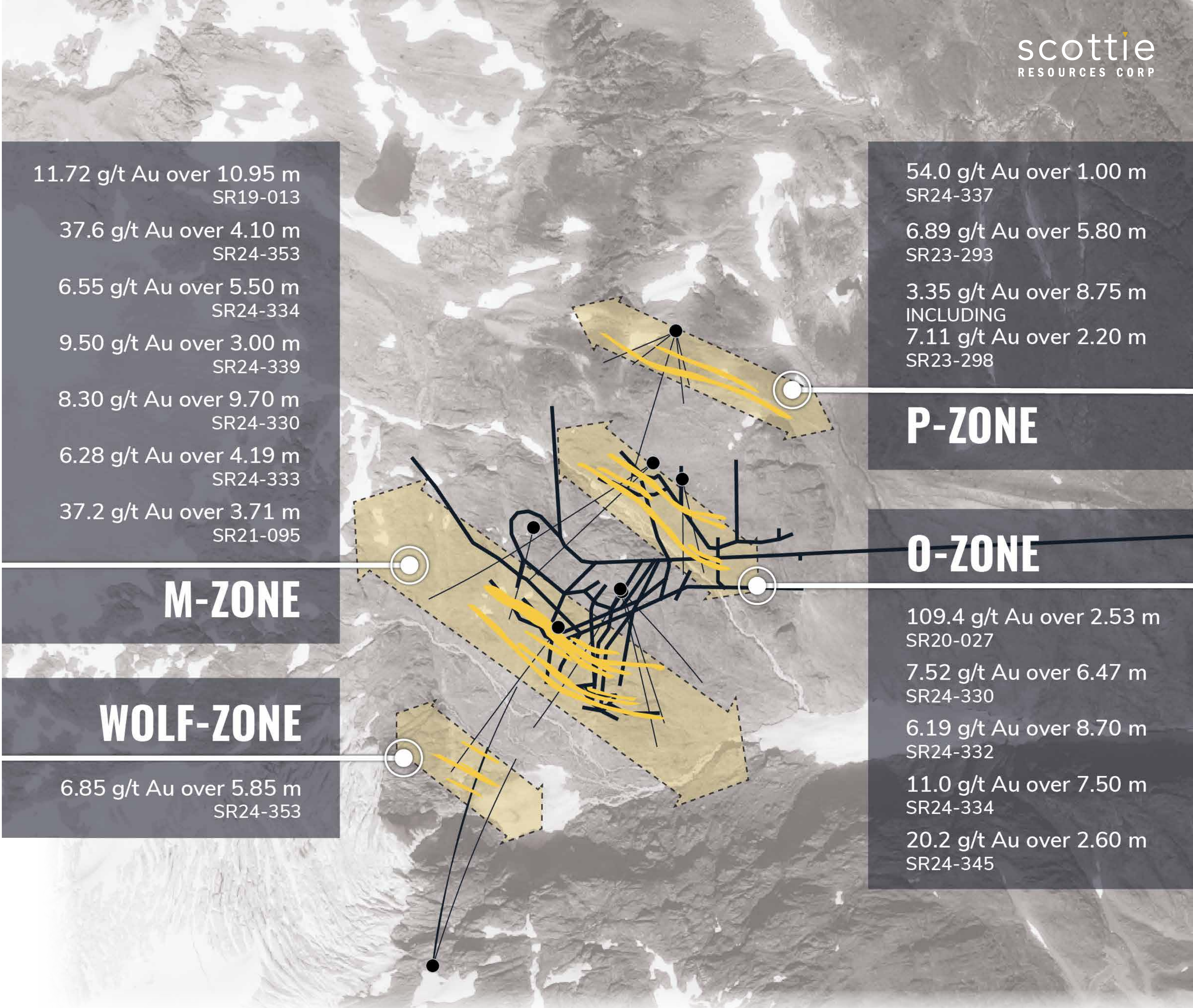
# THE SCOTTIE GOLD MINE

Historic drilling was production focused  
Average hole length was only 75.2 m long

Mine produced 95,426 ounces of gold  
from 1981-1984  
Average recovered grade of 16.2 g/t gold

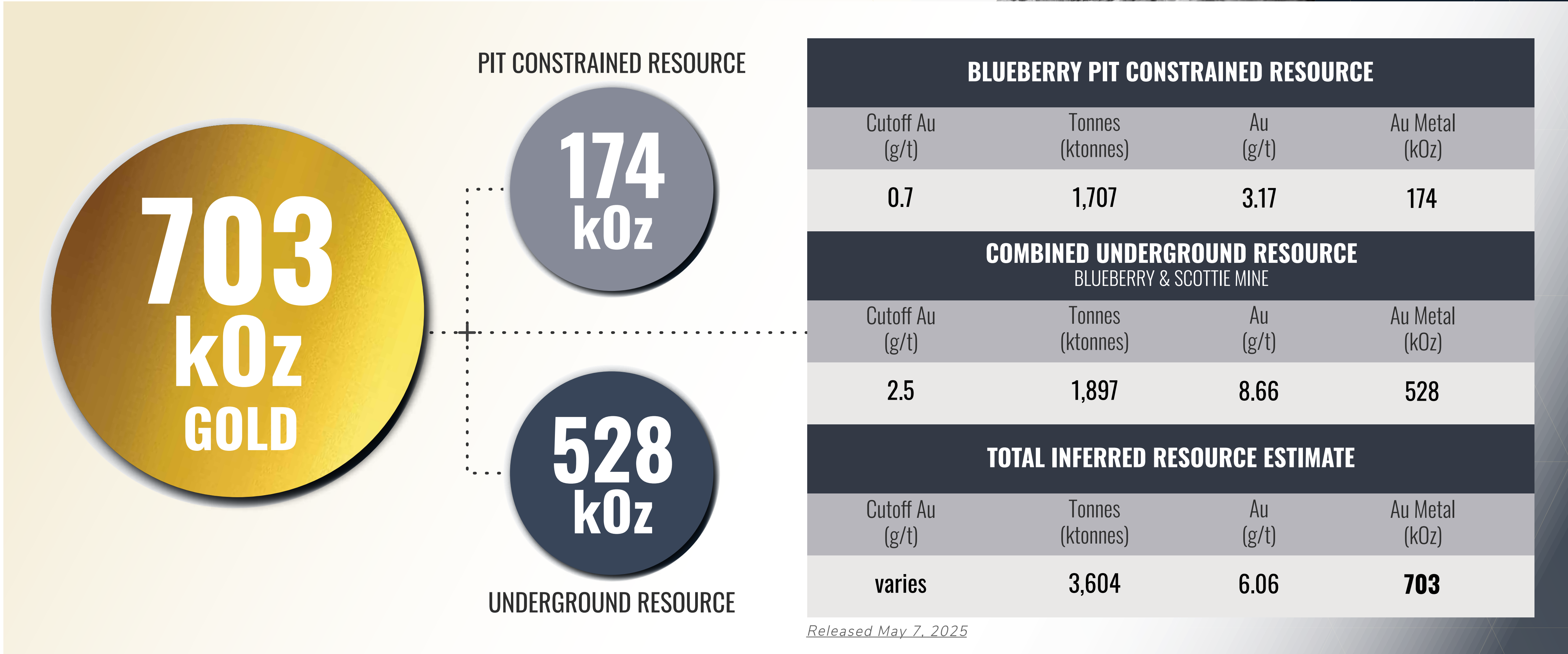
Operated with a 10 g/t gold cutoff

Mine Permit (M139) - Care and Maintenance





# RESOURCE ESTIMATE





# DSO OPERATION

Using ore sorting technology, DSO will eliminate the need for a gold processing plant and tailings facility, significantly reducing both the capital required and the environmental footprint.

## STRATEGY

Commence open pit mining, reducing capital costs as well as start-up and operational risk

## TIMING

Structural supply deficit in the Asian copper smelter market allows for extremely low treatment charges for the foreseeable future

## PERMITS

Existing mine permit (M139) currently in place, providing pathway to near term production

## POSITION

Located 40 km from a deep-sea shipping terminal in one of the lowest-cost commercial shipping lanes between North America and Asia



PREMIER MILL





## PRELIMINARY ECONOMIC ASSESSMENT

# BLUEBERRY MINE PLAN

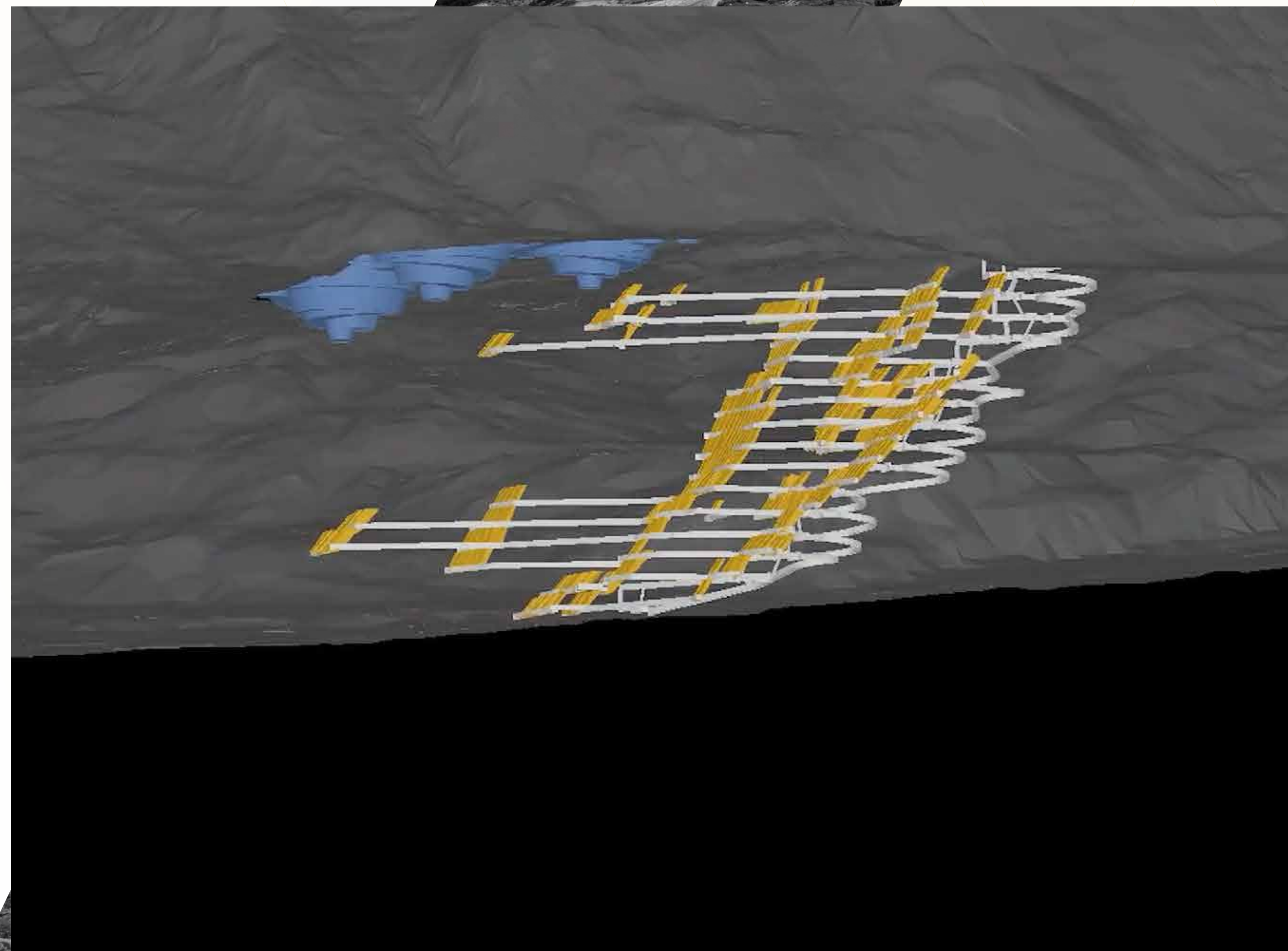
Mine payback 1.2 years (US\$2600 DSO model)

Open pit grade 7.71 g/t gold (79,400 oz)

- De-risks project with rapid project payback

Underground grade 6.91 g/t gold (315,800 oz)

Contract mining for both open pit and underground





## PRELIMINARY ECONOMIC ASSESSMENT

# SCOTTIE GOLD MINE PLAN

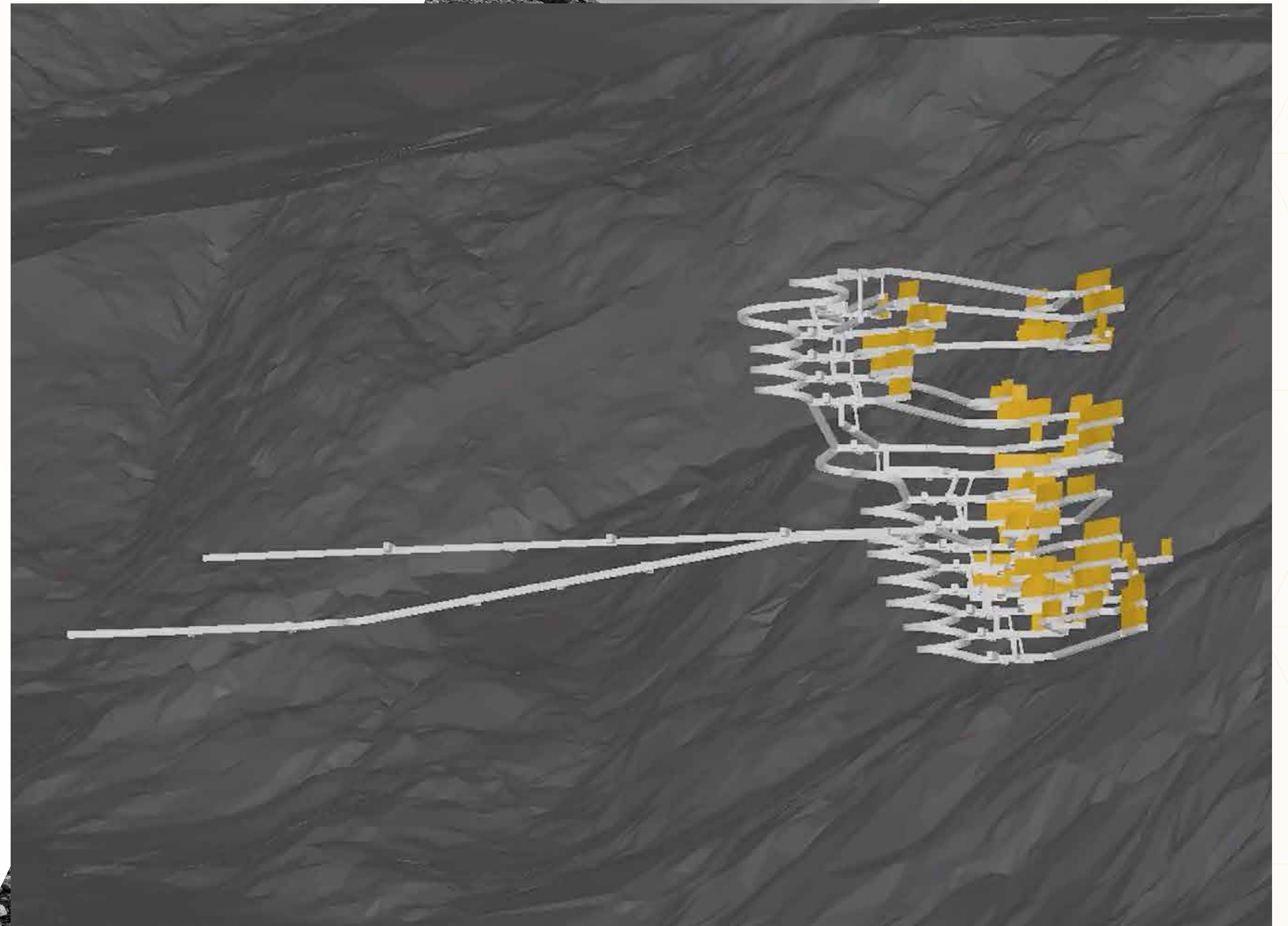
Underground grade 6.07 g/t gold (87,800 oz)

Detailed surveying of existing workings required

- May help with sterilization of adjacent stopes
- Planned for 2026

Planned as all new development

- Opportunity for rehab of old workings



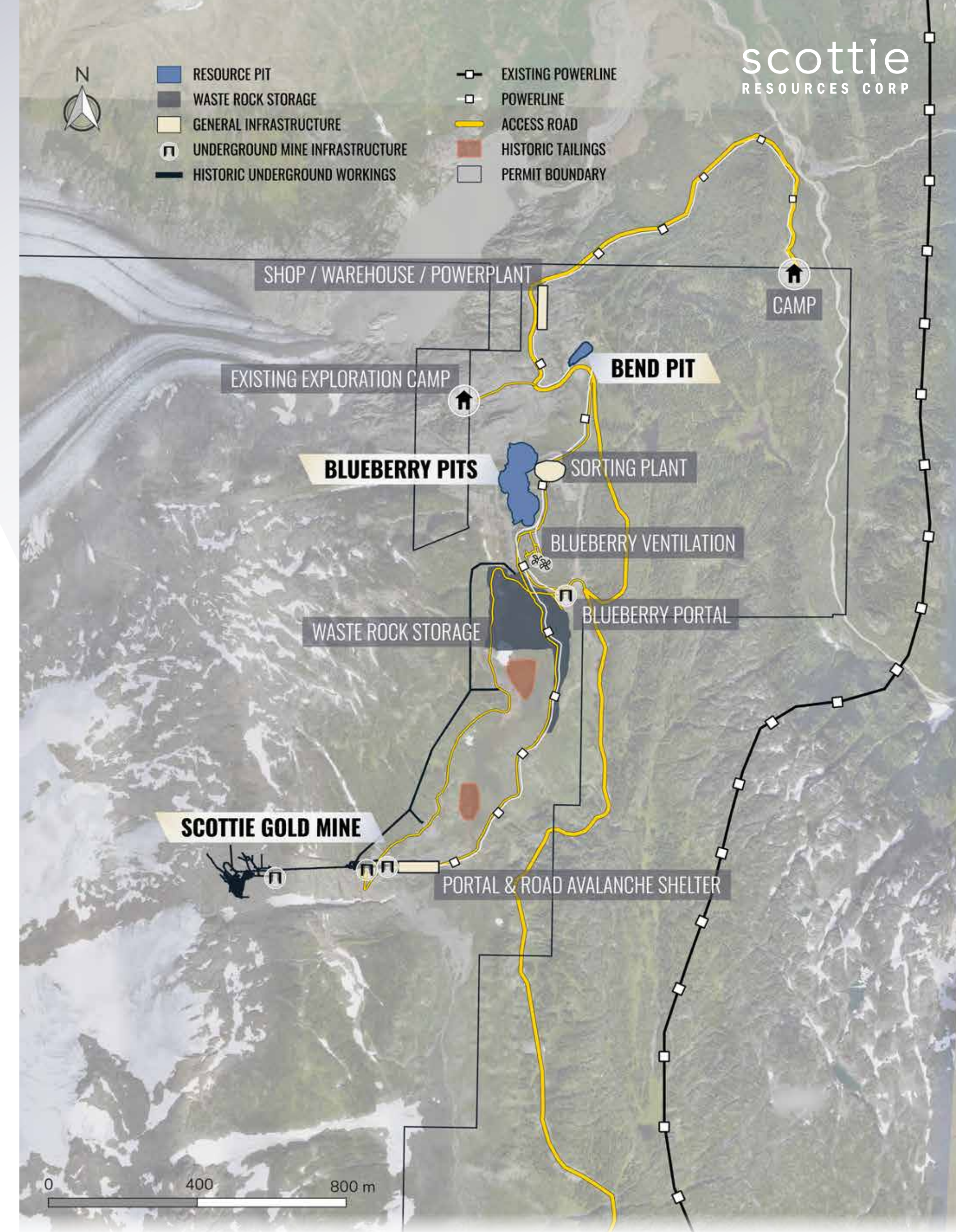
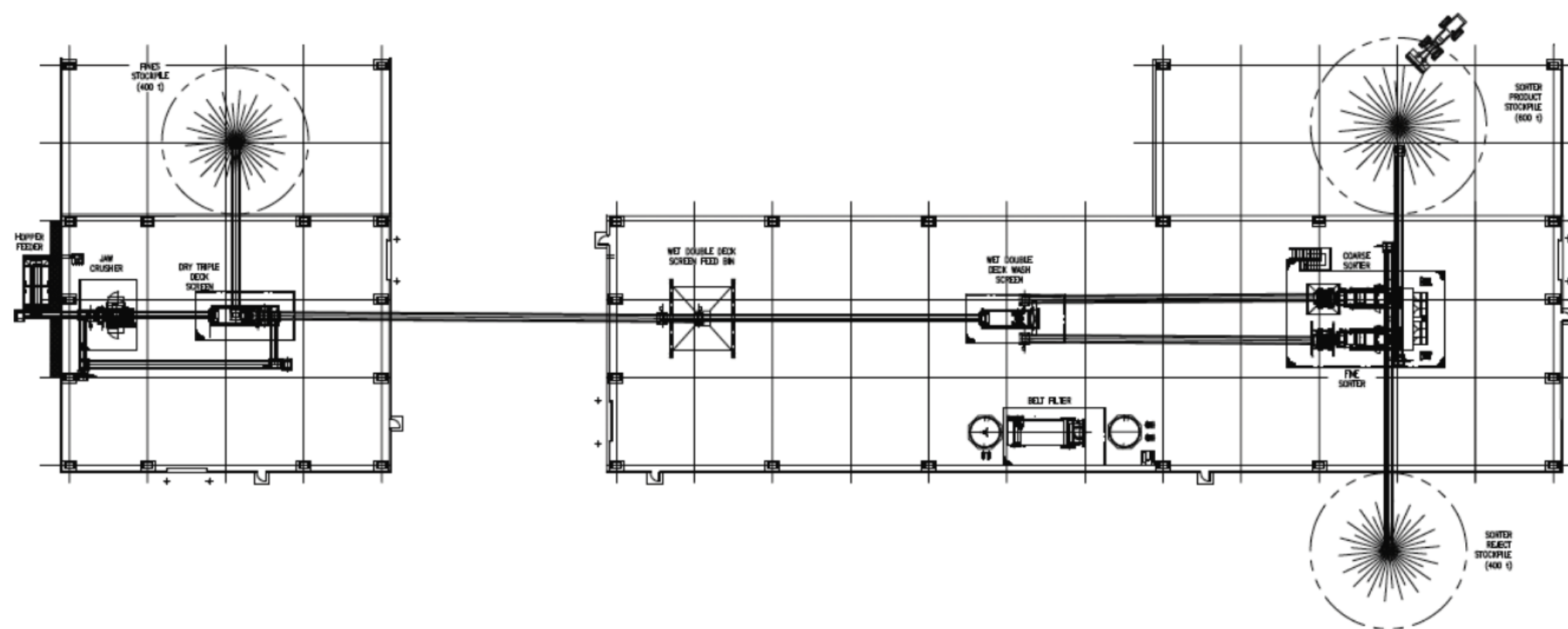


## PRELIMINARY ECONOMIC ASSESSMENT

# SCOTTIE GOLD MINE DSO MINE PLAN

Initial Capital Cost of \$128.6 M CAD

- Camp set back from mining activities
- Integrated shop / warehouse and LNG powerplant
- Crushing and sorting plant (pictured below)
- Covered stockpiles of sorted ore and fines
- Waste rock storage facility
- SGM avalanche shelter



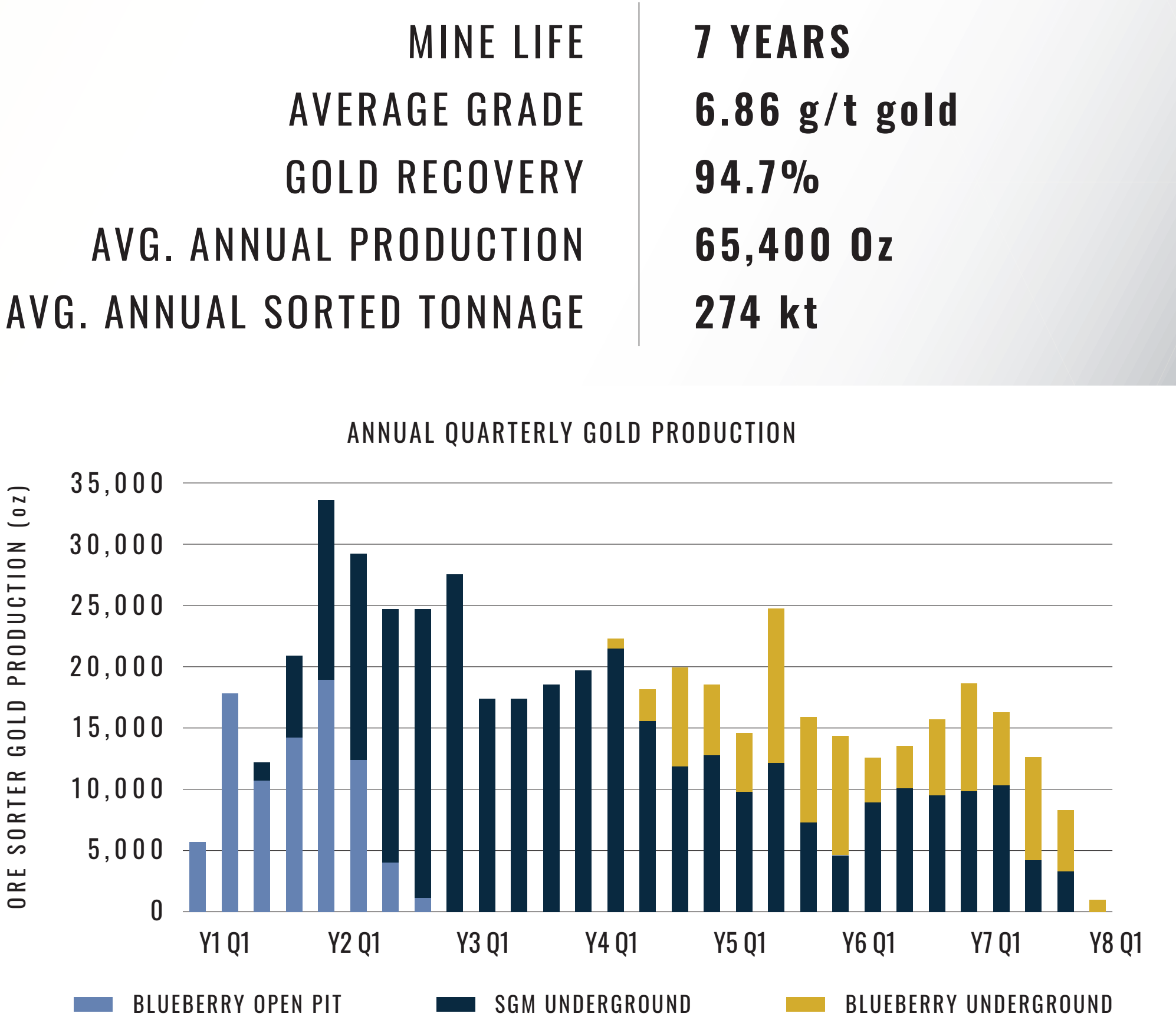


PRELIMINARY ECONOMIC ASSESSMENT

# SCOTTIE GOLD MINE DSO FINANCIALS

AFTER-TAX VALUE   GOLD PRICE \$2600 USD/oz			
NPV <sup>5%</sup>	IRR	PAYBACK	NPV/CAPEX
\$215.8 M CAD	60.3%	1.2 YRS	1.7
AFTER-TAX VALUE   GOLD PRICE \$3400 USD/oz			
NPV <sup>5%</sup>	IRR	PAYBACK	NPV/CAPEX
\$442.0 M CAD	107.9%	0.8 YRS	3.4
AFTER-TAX VALUE   GOLD PRICE \$4200 USD/oz			
NPV <sup>5%</sup>	IRR	PAYBACK	NPV/CAPEX
\$668.3 M CAD	153.2%	0.6 YRS	5.2

PEA DSO Base Case USD\$2600/oz gold, released October 28th, 2025





## PRELIMINARY ECONOMIC ASSESSMENT

# TOLL MILLING SCENARIO

### Conceptual Toll Milling Opportunity with Premier Mill

- No agreement currently in place
- Located 20 km en route to bulk terminal

Compelling financial opportunity for both operations



### AFTER-TAX VALUE | GOLD PRICE \$2600 USD/oz

NPV <sup>5%</sup>	IRR	PAYBACK	NPV/CAPEX
\$380.1 M CAD	89.9%	0.9 YRS	3.0

### AFTER-TAX VALUE | GOLD PRICE \$3400 USD/oz

NPV <sup>5%</sup>	IRR	PAYBACK	NPV/CAPEX
\$606.0 M CAD	135.2%	0.7 YRS	4.7

### AFTER-TAX VALUE | GOLD PRICE \$4200 USD/oz

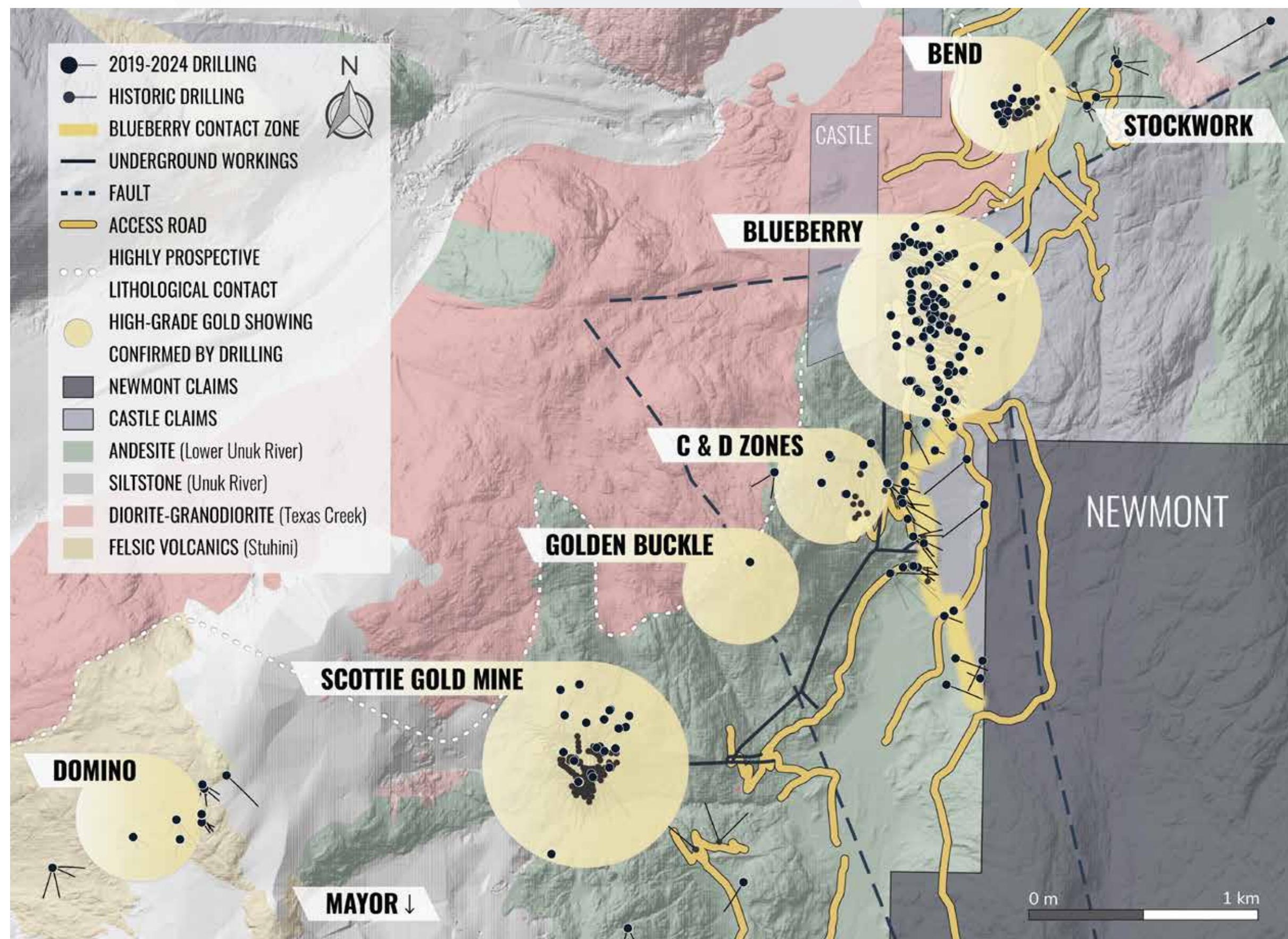
NPV <sup>5%</sup>	IRR	PAYBACK	NPV/CAPEX
\$831.7 M CAD	177.5%	0.5 YRS	6.5

PEA DSO Base Case USD\$2600/oz gold, released October 28th, 2025



# RESOURCE UPSIDE

Top Intercepts from 2019 - 2024



## AT LEAST PARTIAL INCLUSION IN MRE

### M-ZONE SCOTTIE GOLD MINE

PARTIALLY INCLUDED IN MRE

37.6 g/t Au over 4.1 m

37.2 g/t Au over 3.71 m

11.7 g/t Au over 10.95 m

### O-ZONE SCOTTIE GOLD MINE

LIMITED INCLUSION IN MRE

109.4 g/t Au over 2.53 m

11.0 g/t Au over 7.5 m

6.19 g/t Au over 8.7 m

### BEND

INCLUDED IN MRE

73.32 g/t Au over 4.28 m

46.53 g/t Au over 1.14 m

### BLUEBERRY

PARTIALLY INCLUDED IN MRE

194.0 g/t Au over 2.4 m

34.6 g/t Au over 11.9 m

7.4 g/t Au over 34.8 m

9.8 g/t Au over 25.0 m

161 g/t Au over 1.3 m

## NOT INCLUDED IN MRE

### STOCKWORK ZONE

5.28 g/t Au over 4.5 m

### DOMINO

2.48 g/t Au over 15.46 m

12.4 g/t Au over 2.69 m

536 g/t Au grab sample

### GOLDEN BUCKLE

6.85 g/t Au over 5.85 m

### C & D ZONE

36.3 g/t Au over 5.0 m

31.8 g/t Au over 4.0 m

6.82 g/t Au over 6.85 m

### MAYOR

9.48 g/t Au & 2,000 g/t Ag  
grab sample

1.06 g/t Au & 3,510 g/t Ag  
grab sample

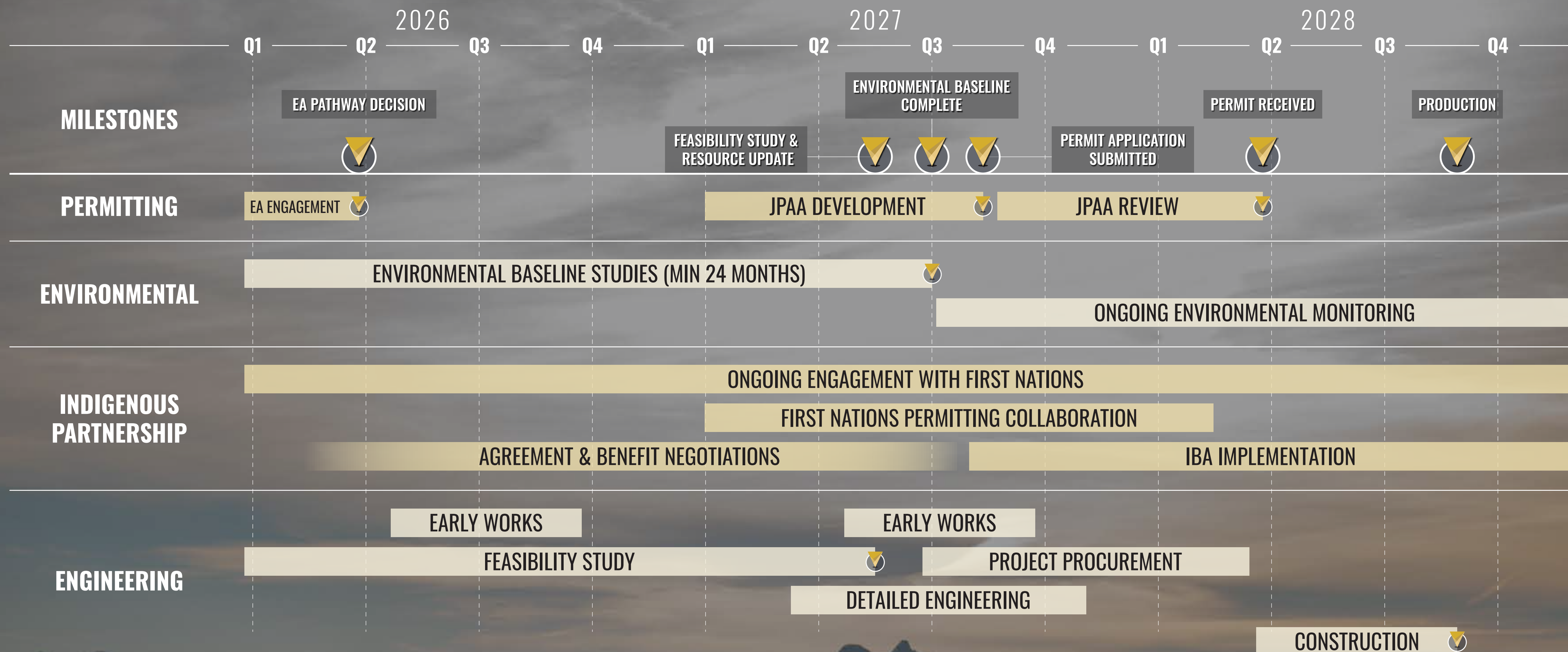


# 2025 WORK PROGRAM

- ✓ Targeted drill program focused on resource upgrade and expansion (27,300 m drilled)
- ✓ Mine design engineering
- ✓ Phase II ore sorting study
- ✓ PEA and FS level geotechnical study
- ✓ Initiate environmental baseline studies
- ✓ Complete 10,000 t Surface Bulk Sample



# SGM PROJECT TIMELINE





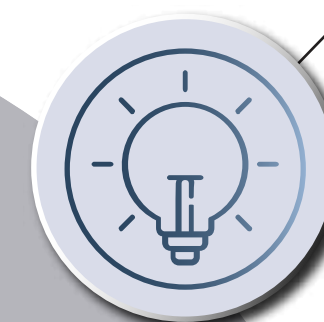
# OUR VALUES IN ACTION

Active involvement from local  
Indigenous groups in  
project development  
and exploration.

Nisga'a Lisims  
Government



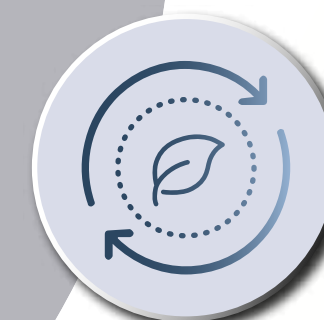
Tsetsaut Skii km  
Lax Ha Nation



Committed to offering employment, training,  
and contracting opportunities to local  
First Nations and surrounding  
community members.



Land donation of 1010 hectares to the  
Meziadin Indigenous Protection Area  
in partnership with the Nature  
Conservancy of Canada.



Ongoing site clean up operations.  
Environmental monitoring and  
water sampling program.



Fully independent, diverse board.





**BRAD ROURKE**  
CEO & DIRECTOR  
+1 250 877-9902  
brad@scottieresources.com

WWW.SCOTTIERESOURCES.COM

905-1111 West Hastings St.,  
Vancouver, BC, V6E 2J3, Canada

FOOTNOTES

<sup>1</sup> Schaft Creek Preliminary Economic Assessment (PEA), NI 43-101 Technical Report, Sept 10, 2021  
<sup>2</sup> Galore Creek Reserves and Resources, Teck Annual Report, 2018  
<sup>3</sup> KSM Prefeasibility Study and Preliminary Economic Assessment, NI 43-101 Technical Report, Aug 8, 2022

<sup>4</sup> Red Chris Operations British Columbia, Canada NI 43-101 Technical Report, Jun 30, 2021  
<sup>5</sup> Eskay Creek Project NI 43-101 Technical Report and Feasibility Study, Sept 19, 2022  
<sup>6</sup> NI-43-101 Technical Report for the Treaty Creek Project, Apr 28, 2023

